



**Project:** Industrial **Rev. #:** 0 **Location:** Industrial - Cannor to Arnold  
**Sign Spacing:** 40 **Taper Lengths:** 35

**Comments:**

- 1. Workers can only leave work zone when accompanied by a TCP
- 2. A buffer truck is in closure when workers are present
- 3. Traffic can be stopped for up to 2 minutes at a time
- 4. TCP indicated on drawing is mobile and moves with workers

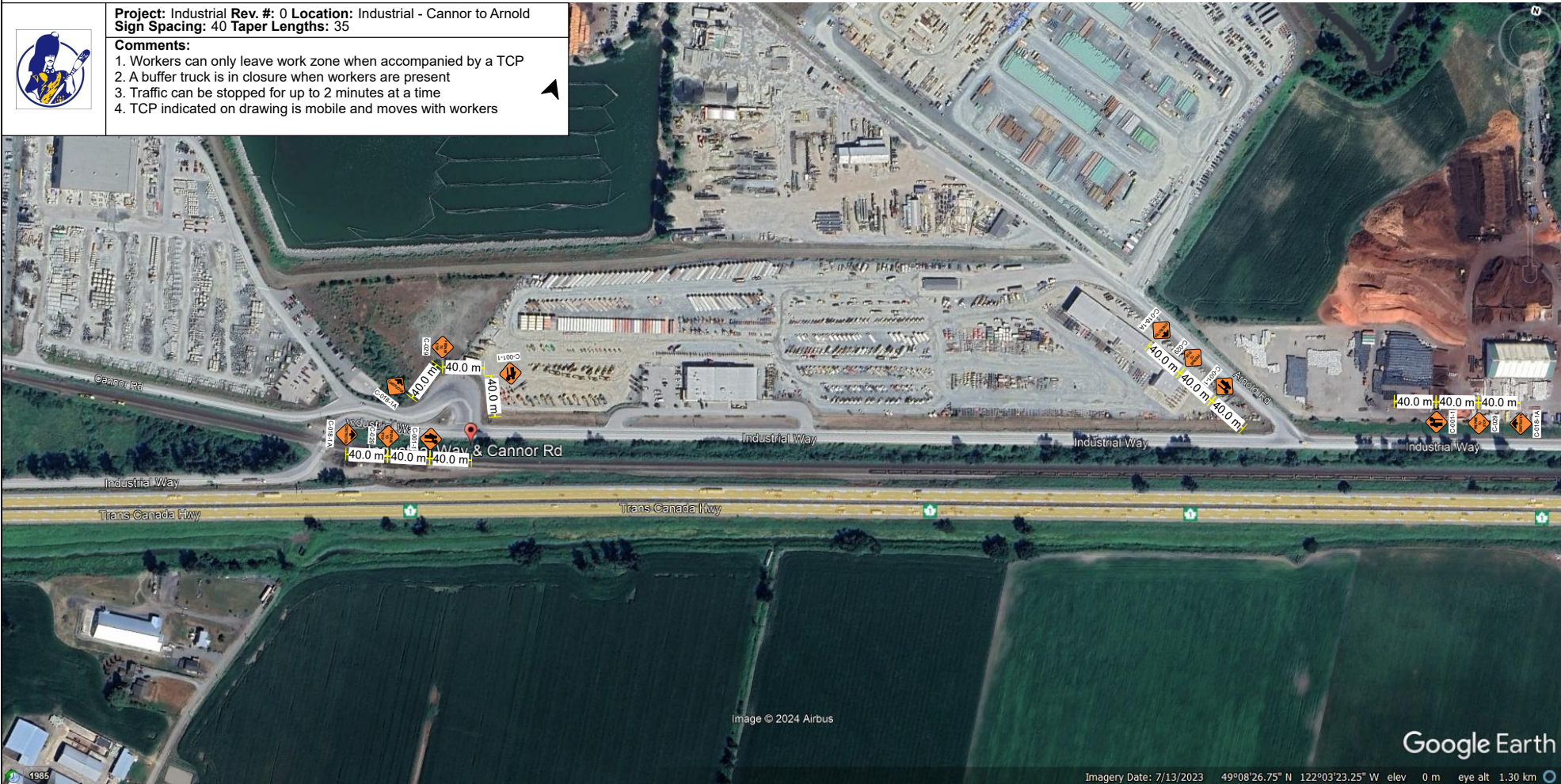


Image © 2024 Airbus

Google Earth

Imagery Date: 7/13/2023 49°08'26.75" N 122°03'23.25" W elev 0 m eye alt 1.30 km



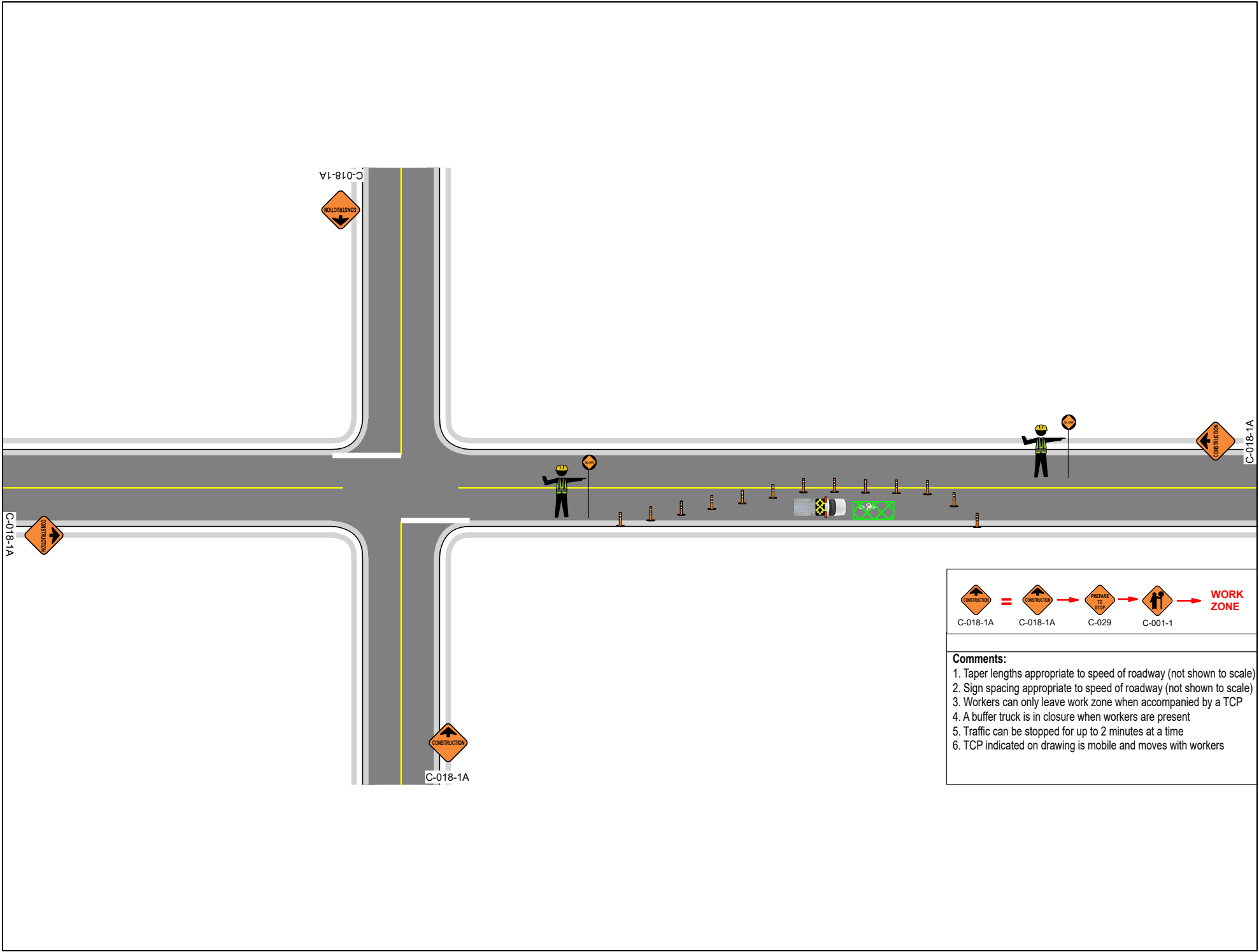
**Project:** Industrial **Rev. #:** 0 **Location:** Industrial - Old Orchard to Progress  
**Sign Spacing:** 40 **Taper Lengths:** 35

- Comments:**
1. Workers can only leave work zone when accompanied by a TCP
  2. A buffer truck is in closure when workers are present
  3. Traffic can be stopped for up to 2 minutes at a time
  4. TCP indicated on drawing is mobile and moves with workers

Google Earth

Imagery Date: 7/13/2023 49°08'41.09" N 122°01'45.31" W elev 0 m eye alt 1.56 km

1985

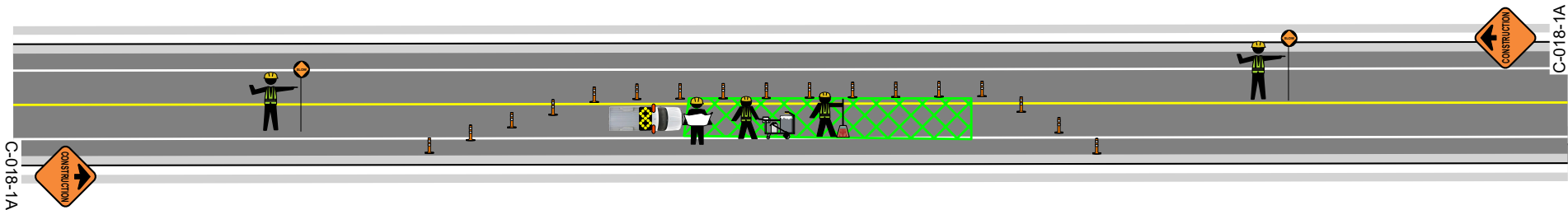


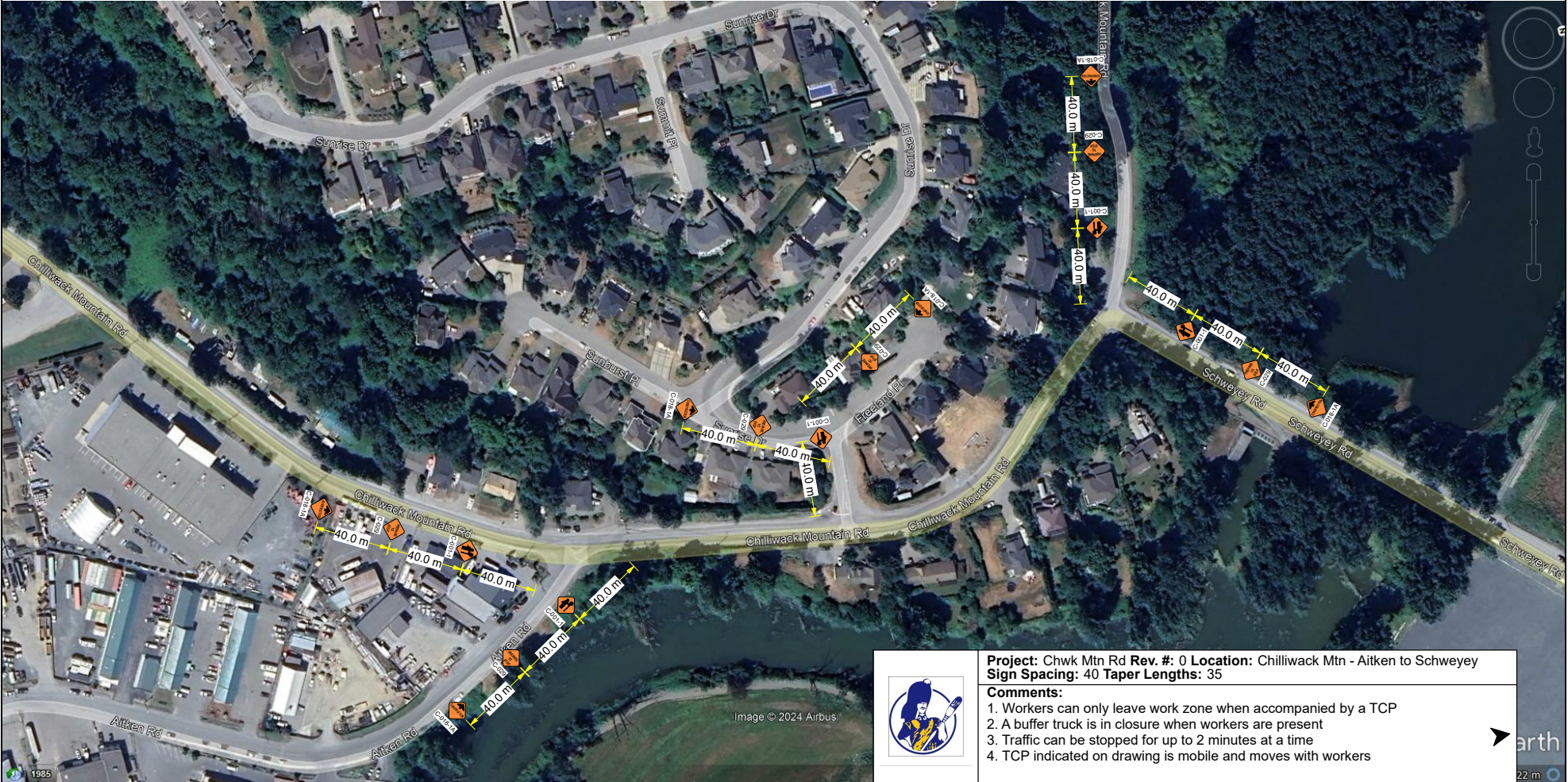
**Comments:**

1. Taper lengths appropriate to speed of roadway (not shown to scale)
2. Sign spacing appropriate to speed of roadway (not shown to scale)
3. Workers can only leave work zone when accompanied by a TCP
4. A buffer truck is in closure when workers are present
5. Traffic can be stopped for up to 2 minutes at a time
6. TCP indicated on drawing is mobile and moves with workers



- Comments:**
- 1. Taper lengths appropriate to speed of roadway (not shown to scale)
  - 2. Sign spacing appropriate to speed of roadway (not shown to scale)
  - 3. Workers can only leave work zone when accompanied by a TCP
  - 4. A buffer truck is in closure when workers are present
  - 5. Traffic can be stopped for up to 2 minutes at a time
  - 6. TCP indicated on drawing is mobile and moves with workers





**Project:** Chwk Mtn Rd Rev. #: 0 **Location:** Chilliwack Mtn - Aitken to Schweyey  
**Sign Spacing:** 40 Taper Lengths: 35

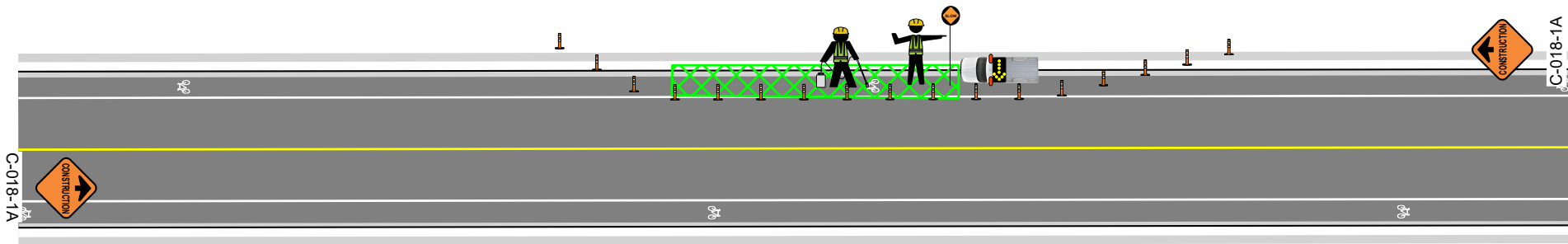
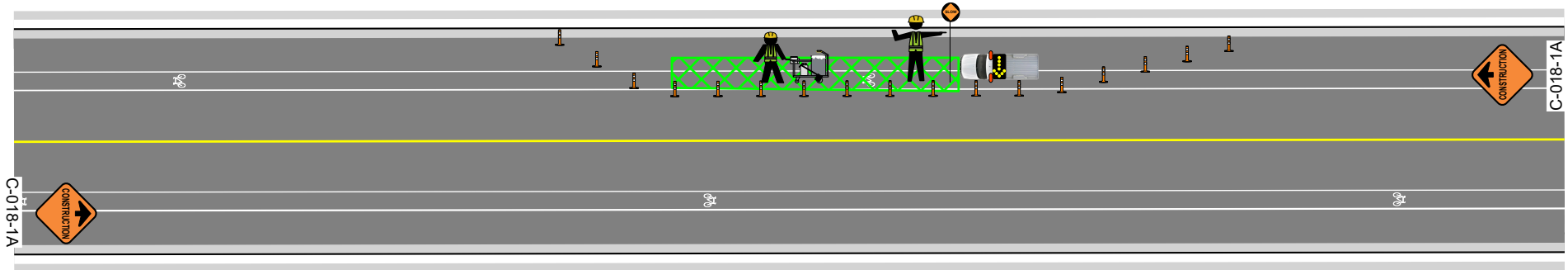
**Comments:**

- 1. Workers can only leave work zone when accompanied by a TCP
- 2. A buffer truck is in closure when workers are present
- 3. Traffic can be stopped for up to 2 minutes at a time
- 4. TCP indicated on drawing is mobile and moves with workers

Image © 2024 Airbus



- Comments:**
1. Taper lengths appropriate to speed of roadway (not shown to scale)
  2. Sign spacing appropriate to speed of roadway (not shown to scale)
  3. Workers can only leave work zone when accompanied by a TCP
  4. A buffer truck is in closure when workers are present
  5. Traffic can be stopped for up to 2 minutes at a time
  6. TCP indicated on drawing is mobile and moves with workers

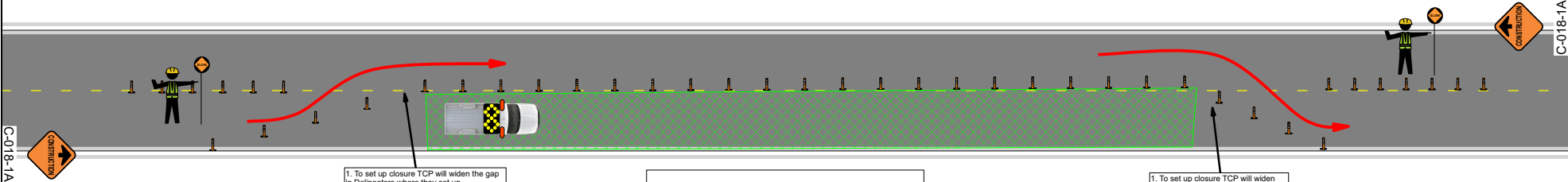


### GENERIC S.L.A.T. LAYOUT AND INSTALL CLOSURE FOR INTERMITTENT MOVING WORK ZONE

**Project:** Moving Work Zone S.L.A.T CL Layout

**Comments:**

- 1) Install delineators just off centre of CL so the side you are doing measurements from is bigger
- 2) When work in closure complete and starting to move, walk to new closure off of the road
- 3) TCP stops traffic from the side of the travel lane and moves in front of vehicles once they are stopped



- 1. To set up closure TCP will widen the gap in Delineators where they set up
- 2. When closure moves replace the delineator in correct place
- 3. Use the 3 delineators preceding where you will send traffic as a taper



- Comments:**
- 1. Taper lengths appropriate to speed of roadway (not shown to scale)
  - 2. Sign spacing appropriate to speed of roadway (not shown to scale)
  - 3. Workers can only leave work zone when accompanied by a TCP
  - 4. A buffer truck is in closure when workers are present
  - 5. Traffic can be stopped for up to 2 minutes at a time
  - 6. TCP indicated on drawing is mobile and moves with workers

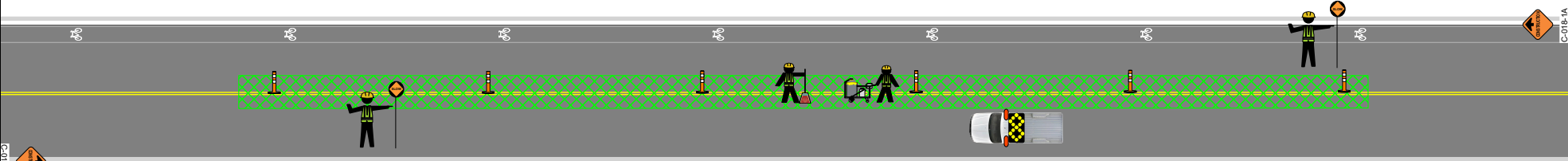
- 1. To set up closure TCP will widen the gap in delineators to allow traffic to move back to correct lane
- 2. When closure moves, delineators are restored to centreline

### GENERIC SLOW ROLL INSTALL CLOSURE

**Project:** Slow Roll S.L.A.T CL Install

**Comments:**

- 1) East TCP holds traffic
- 2) West TCP sends traffic around closure
- 3) West TCP walks west on south shoulder 100 to 150m from Work Zone
- 4) West TCP holds eastbound traffic at new location
- 5) East TCP sends westbound traffic
- 6) East TCP walks west on north shoulder or south travel lane (whichever is safest) to within 50m of work zone



**Project:** Slow Roll S.L.A.T EL Install

**Comments:**

- 1) East TCP holds traffic
- 2) West TCP sends traffic around closure
- 3) West TCP walks west on north shoulder 100 to 150m from Work Zone
- 4) West TCP holds eastbound traffic at new location
- 5) East TCP sends westbound traffic
- 6) East TCP walks west on north shoulder to within 50m of work zone

**Comments:**

- 1. Taper lengths appropriate to speed of roadway (not shown to scale)
- 2. Sign spacing appropriate to speed of roadway (not shown to scale)
- 3. Workers can only leave work zone when accompanied by a TCP
- 4. A buffer truck is in closure when workers are present
- 5. Traffic can be stopped for up to 2 minutes at a time
- 6. TCP indicated on drawing is mobile and moves with workers

